

REINTJES Fast Clutch

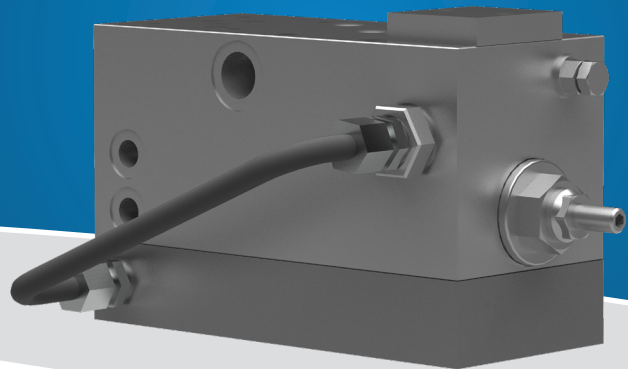
FC 200 P2

Available for gearbox types

WAF / LAF 164 - 573

WVS / WLS 234 - 930

ZWVS 440 - 930



Fast shifting times ahead and astern with soft clutch engagement

Solution: REINTJES Fast Clutch

REINTJES Fast Clutch

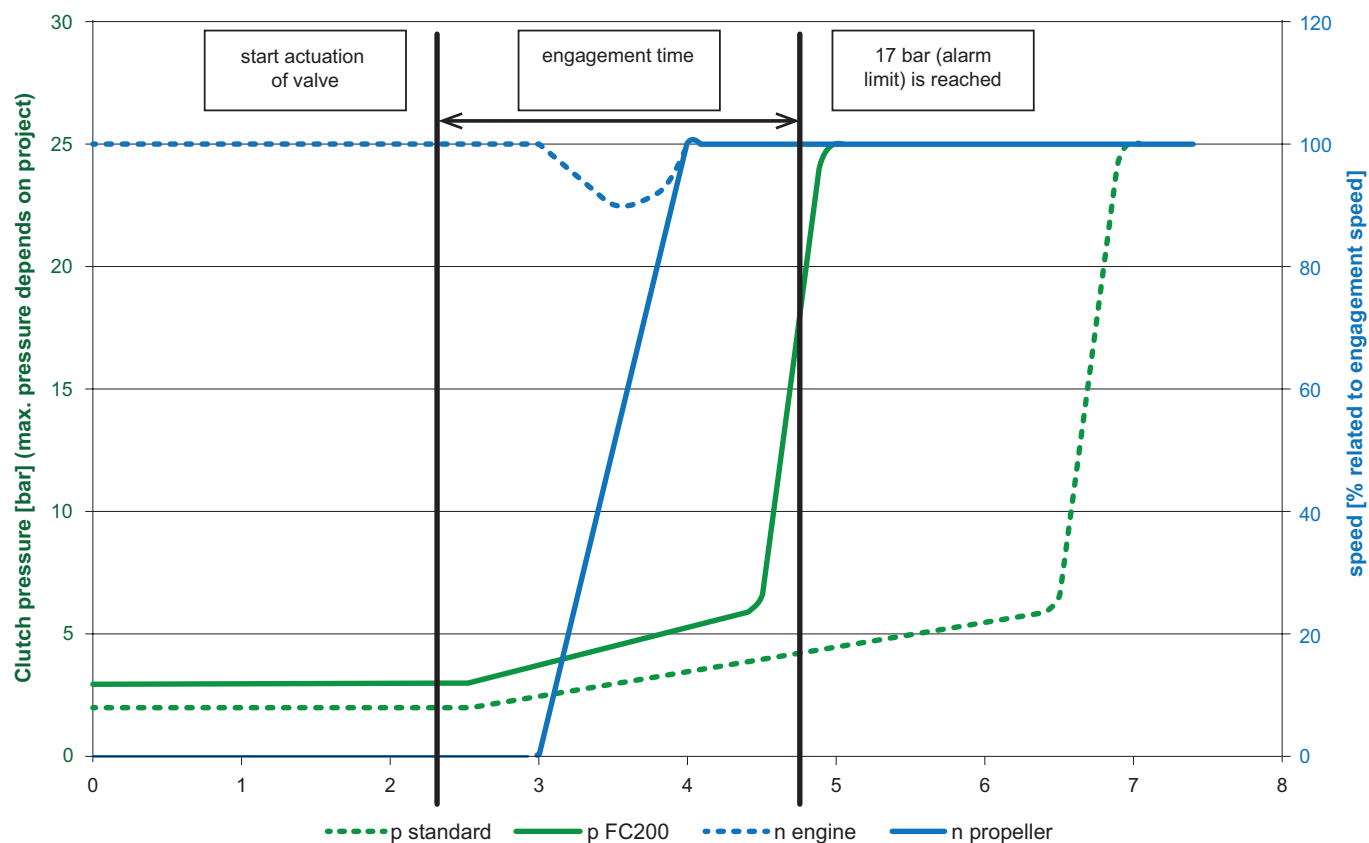
available for applications like:

- Wind farm transfer / supply vessels
- Tug boats
- Yachts
- Fishing vessels
- Inland waterway vessels

The "Fast Clutch" system is designed to achieve a fast and seamless engagement of the gearbox clutches. By increasing the pre-pressure of the gearbox hydraulic system, engagement times for travel directions ahead and astern can be reduced by up to 50 % compared to conventional systems while still ensuring a soft engagement of the clutches.

The "Fast Clutch" system may be installed on new gearboxes or retrofitted on REINTJES gearboxes that are already in operation.

This system cannot be used in combination with the REINTJES Active Speed Control System "ADS".





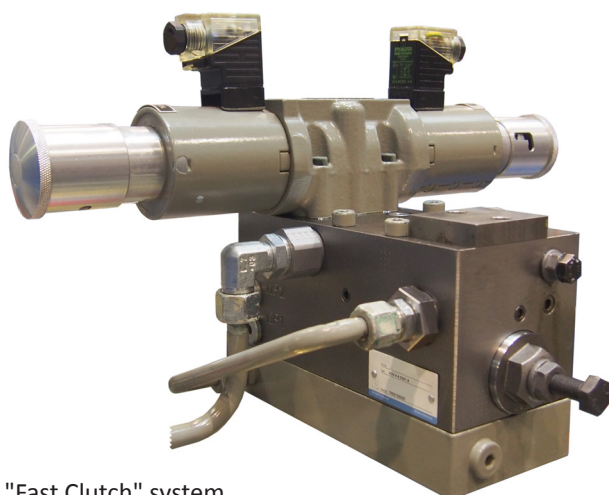
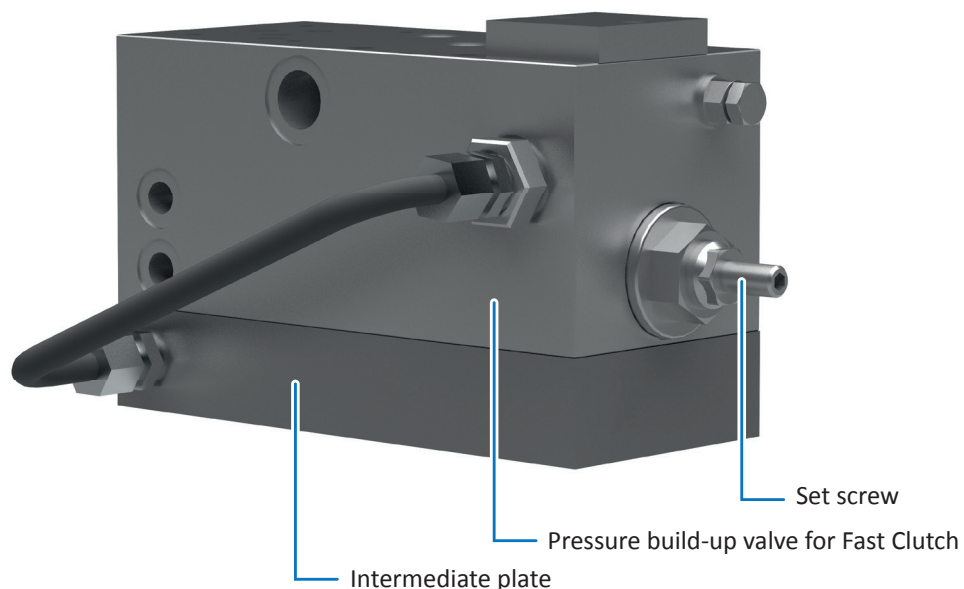
"Fast Clutch"

REINTJES scope of supply:

1. Pressure build-up valve for "Fast Clutch"
2. Intermediate plate.

The operating pressure of the "Fast Clutch" system is pre-adjusted at 50 °C (122 °F) operating temperature during trial run at the factory.

During commissioning or retrofitting the "Fast Clutch" system, qualified REINTJES service staff adjusts the system to the conditions on board of the ship, taking into account the operating characteristics of the drive train such as turning speed of the engine and overall weight of the propeller unit.



"Fast Clutch" system
(shown here with electric control valve)

Retrofit

When retrofitting the "Fast Clutch" system, the existing pressure build-up valve will be replaced by the "Fast Clutch" pressure build-up valve.

Your REINTJES gearbox can be retrofitted with the "Fast Clutch" system if the gearbox is equipped with a pressure build-up valve with a pressure range of 25 bar (2500 kPa, 362 psi) and if it is equipped with an electric control valve for the gearbox main clutch.

If your gearbox is equipped with a pressure build-up valve with a pressure range of 22 bar (2200 kPa, 319 psi), it must be checked in advance if a retrofit is possible.

Please contact REINTJES service to perform a technical check if the "Fast Clutch" system can be retrofitted to your gearbox.



REINTJES GmbH
Eugen-Reintjes-Straße 7
31785 Hameln
Germany
Phone +49 51 51 104-0
Fax +49 51 51 104-300
E-mail info@reintjes-gears.de
www.reintjes-gears.de

This document and the technical data contained herein are subject to technical modifications and are non-binding. The data serve informational purposes and cannot be guaranteed in any way. In addition, our gearboxes will be assessed and determined individually for each project. This is necessary due to differing characteristics of each project like specific site and operational conditions. If this document is delivered in another language than English and in case of divergences of interpretation between the different language texts, the English text shall prevail.